



January 19, 2017

Mr. Josh Bryant
District Administrator, CA-61
109 Terrace Drive
Taft, CA 93286

RE: Boundary Map – Westside Little League 405-61-09

Hi Josh:

This will acknowledge receipt of a Boundary Map, approved by you, for Westside LL.

The map will be placed in the league's permanent file here at Regional Headquarters and may be considered approved by Little League providing the boundaries do not conflict with any prior approved boundaries of any other chartered Little League program. You should also retain a copy of the approved map for your files.

Each year, at registration, the league should display the approved map to insure that only those candidates who reside within the league's geographic boundaries are accepted into the league.

Please advise the league on this matter.

Best regards to the dedicated volunteers of your district for a safe and successful 2017 season.

Sincerely,

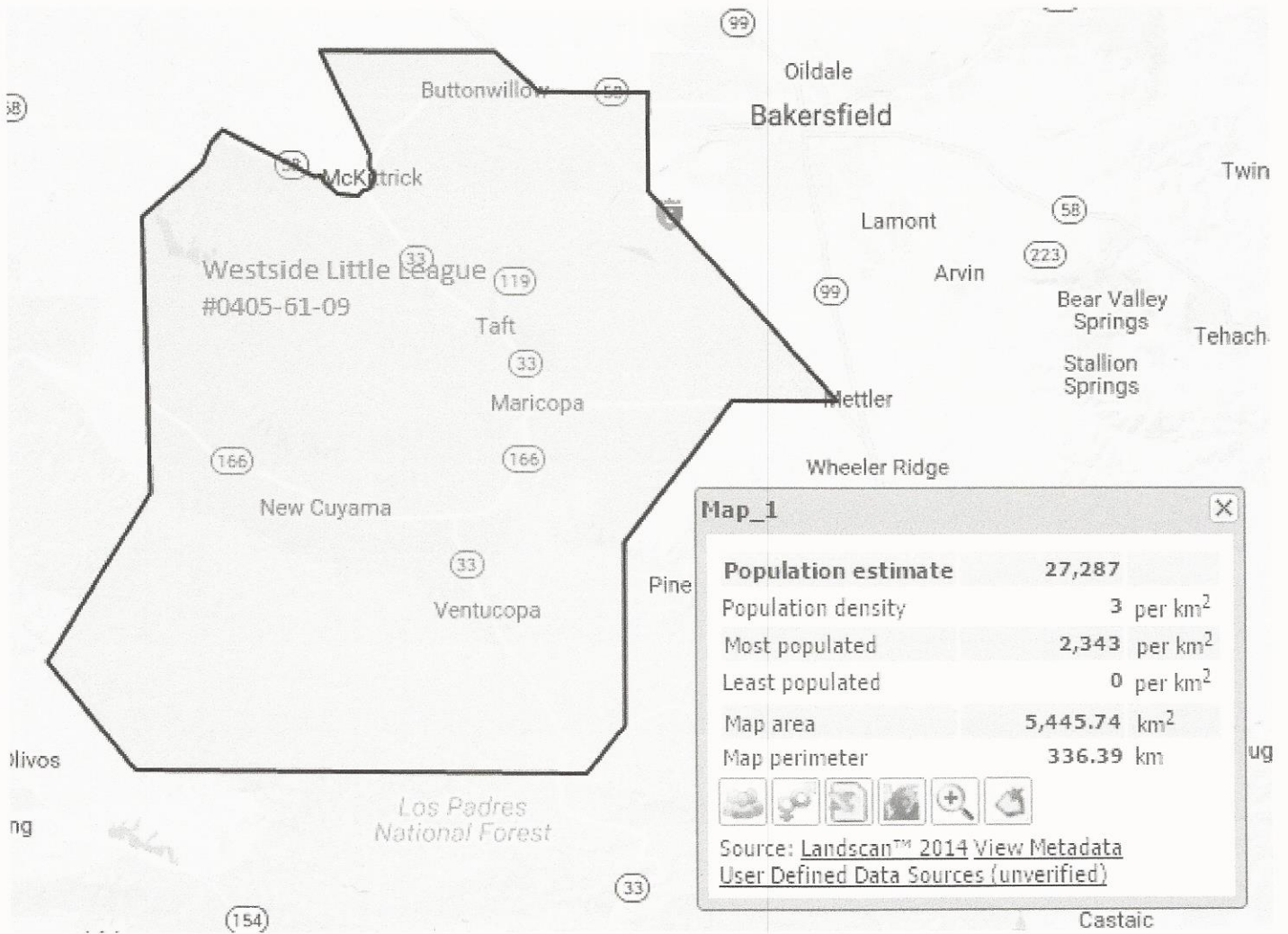
Brian Pickering
Western Region Assistant Director

[Handwritten Signature]
1-9-2017

WESTSIDE LITTLE LEAGUE
ID# 04056109

[Handwritten Signature]
01-10-17
DA CA-62
Oildale





WESTSIDE LITTLE LEAGUE
ID# 04056109
LEAGUE BOUNDARIES DESCRIPTION

-NORTH BOUNDARY

From the intersection of Soda Lake Road and 7 Mile Road northeast to its intersection with CA Highway 58. CA Highway 58 and Seven Mile Road east to San Luis Obispo & Kern County Line. San Luis Obispo & Kern County Line east on CA Highway 58 to its intersection with Reward Road. Reward Road east to its intersection with CA Highway 33. CA Highway 33 north to its intersection with 7th Standard Road. 7th Standard Road east to its intersection with U.S. Interstate 5. U.S. Interstate 5 south to its intersection CA Highway 58. CA Highway 58 east to its intersection with CA Highway 43 / Enos Lane.

-EAST BOUNDARY

CA Highway 43 / Enos Lane south to its intersection with U.S. Interstate 5. U.S. Interstate 5 south to its intersection with CA Highway 166. CA Highway 166 west to its intersection with Old River Road. CA Highway 166 southwest to the Valley Vista Campground. Valley Vista Campground south to the Ozena Campground.

-SOUTH BOUNDARY

Ozena Campground southwest to the Mine Camp Campground. Mine Camp Campground west to Madulce Peak. West from Madulce Peak to Samon Peak. Samon Peak west to Sisquac River. Sisquac River west to its intersection with Manzana Creek.

-WEST BOUNDARY

From Manzana Creek and Sisquac River intersection north to the Bates Canyon Campground. Bates Canyon Campground north to the Intersection of Soda Lake Road and Seven Mile Road.

Summary of changes:

-Incorporated area to north covering the City of Buttonwillow (from CA Highway 33 at Reward Road north to 7th Standard Road, then east on 7th Standard Road to U.S. Interstate 5, then south on U.S. Interstate 5 to CA Highway 43, then CA Highway 43 south to U.S. Interstate 5). Population of newly-annexed area: approx. 1,500.

-Removal of area to northeast covering southwest Bakersfield (from CA Highway 43 at CA Highway 119 north to CA Highway 58, CA Highway 58 east to CA Highway 99, then CA Highway 99 south to CA Highway 166), ceding boundary to new league (Greenfield Little League).